

- BG** Инструкция за монтаж и експлоатация
- EN** Instruction for installation and use
- RO** Instrucțiune de instalare și utilizare
- SRB** Uputstvo za ugradnju i upotrebu
- HR** Uputstvo za ugradnju i upotrebu
- BIH** Uputstvo za ugradnju i upotrebu
- HU** Szerelési és kezelési utasítás
- SLO** Navodilo za vgradnjo in uporabo
- GR** Οδηγισο για την εγκατασταση και τη χρηση
- MK** Упатство за вградување и употреба
- SK** Návod na montáž a používanie
- PL** Instrukcja instalacji i użytkowania
- PG** Instrução para instalação e uso
- IT** Istruzioni per l'installazione e l'uso



- BG** Стълбищен автомат TE 17
- EN** Staircase time lag switches TE 17
- RO** Comutatoare de decalaj a scărilor TE 17
- SRB** Prekidači sa vremenskim kašnjenjem stepenica TE 17
- HR** Prekidači sa vremenskim kašnjenjem stepenica TE 17
- BIH** Prekidači sa vremenskim kašnjenjem stepenica TE 17
- HU** Lépcsőház időkésleltető kapcsolók TE 17
- SLO** Stopnišna stikala časovnega zamika TE 17
- GR** Διακόπτες χρονικής καθυστέρησης σκάλας TE 17
- MK** Прекинувачи за временско задоцнување на скалите TE 17
- SK** Schodiskové časové spínače TE 17
- PL** Przełączniki opóźnienia na klatce schodowej TE 17
- PG** Interruptores de atraso de tempo da escada TE 17
- IT** Interruttori temporizzati scale TE 17

STAIRCASE TIME LAG SWITCHES
Type TE 17

Main Characteristics

TE 17

- Basic staircase time lag switch:

Press the push button briefly to switch ON the load. After an adjustable time “T”, the light will switch OFF automatically



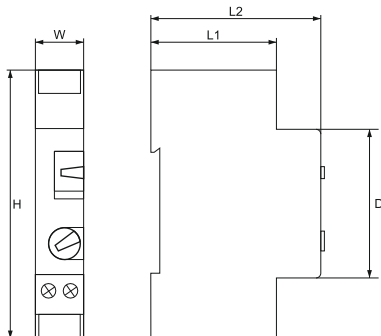
Time delay setting	30s ~10m(12 m, 20m)
Auto / Manual mode	Manual override

Technical Characteristics

Technical Data	
Mains supply	230V AV (+10% / -15%) 50Hz / 60Hz
Contact	μ16A - 250V AC1
Consumption	< 5VA / <1W
Size (mm)	83 x 60 x17,5
Ingress Protection	IP20

Load Type	
Incandescent / Halogen 230V	2300 W
Halogen VLV associated with ferromagnetic transformer	1500 W
Fluorescent lamps / with ferromagnetic transformer	100 VA / 100 μF
Fluorescent lamps Mono / Duo	1044 W
Flo Compact with electronic integrated transformer (E27) 20W	460 W

Dimensions



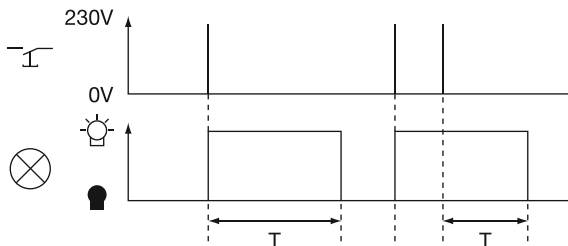
Functional Characteristics

Time Delay	30 seconds to 10 minutes
Retrigger	Yes
Local Command	Automatic / Override ON
Max. current in rest position	100 mA
Automatic 3/4 recognition	Yes
Working temperature	-10°C to +50°C
Storage temperature	-25°C to +70°C
Standards	EN 60669-1, EN 60669-2-1, EN 60669-2-3, EN 6069-2-1

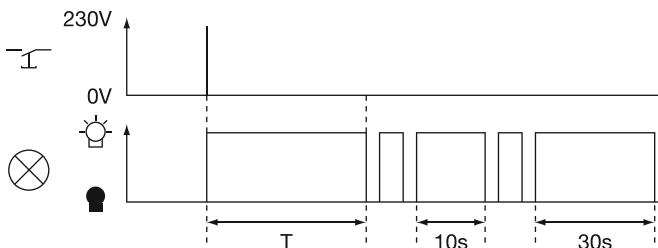
Dimensions (mm)

H	W	L1	L2	D
82	17.5	40	65	45

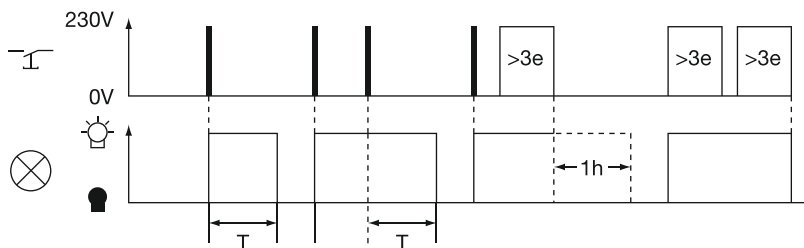
1. Basic mode: Press briefly a push button to switch ON the light. After an adjustable time "T", the light will switch OFF automatically.



1. Pre-warning mode: A signal (blink) appears before the end of the lighting period.



3. Double delay mode: Press a push button to switch ON the light. After an adjustable time "T", the light will switch OFF automatically. If you press the push button for more than 3 seconds, a time lag of one hour will start.



4. Double delay + Pre-warning mode: Press a push button briefly to switch ON the light. After an adjustable time "T", the light will switch OFF automatically. If you press the button for more than 3 seconds, a time lag of one hour will start. A signal (blink) appears before the end of the lighting period.

